



## Twiga Tracker Initiative: Giraffe Tagging Report

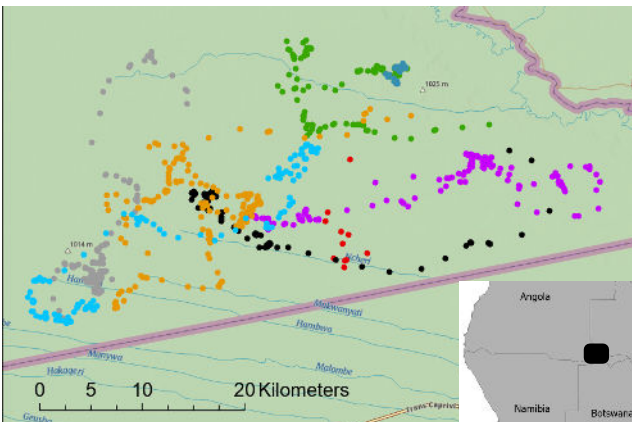
Luengue-Luiana National Park, Angola

21-26 July 2025

### Background

In July 2025, the Giraffe Conservation Foundation (GCF) carried out the latest phase of a multi-year giraffe monitoring operation under GCF's Twiga Tracker initiative. This effort forms part of a broader commitment to understanding giraffe movement ecology throughout Africa and contributes to local and regional conservation planning.

From 21-26 July 2025, a coordinated tagging operation was conducted in Angola, focusing on a key site within the Kavango-Zambezi Transfrontier Conservation Area (KAZA TFCA): the BICO area of Luengue-Luiana National Park (NP). These efforts aimed to address key research topics outlined in the KAZA TFCA Giraffe Conservation Strategy 2022-2026 and the Angola National Strategy and Action Plan for Giraffe Conservation 2025-2030. The giraffe tagging was undertaken as part of a larger tagging operation by multiple partners supported by Instituto Nacional da Biodiversidade e Áreas de Conservação (INBAC) and Elephants Without Borders, whose logistical assistance was instrumental to its success.



Map of initial tagged giraffe movements in the KAZA TFCA landscape.

### Objectives

To fit evaluate transboundary movements of South African giraffe (*G. g. giraffa*) within the KAZA TFCA landscape in Angola, Botswana, and Namibia. As part of a larger initiative, these data will be used to inform landscape-scale connectivity models that support conservation planning and cross-border management of southern giraffe populations.

### Results

The team collaboratively deployed GPS tags on eight South African giraffe (six female, two male) across the BICO area of Luengue-Luiana NP. Seven giraffe were fitted with both a Spoor Track Iridium tail unit (recording hourly GPS fixes, 24/day), and a GSat Solar GlobalStar ear unit (recording every 6 hours, 4/day), providing redundancy and improved data resolution. One female giraffe was fitted with only a GSAT ear tag. Live feeds of all data are available to relevant stakeholders through EarthRanger and Movebank.

### Acknowledgements

We thank INBAC for their collaboration on and commitment to southern giraffe conservation in Angola. We also extend our gratitude to Elephants Without Borders for their support and partnership throughout the project. Special thanks to Namibian Wildlife Vets for their invaluable field assistance.



**INBAC**  
INSTITUTO NACIONAL DA BIODIVERSIDADE E ÁREAS DE CONSERVAÇÃO

